



PORTS  
AUTHORITY

GOVERNMENT OF PUERTO RICO

# AGC - Puerto Rico Chapter 8th Executive Conference Maritime Ports Capital Projects

Sept 05, 2025





PORTS  
AUTHORITY

GOVERNMENT OF PUERTO RICO

# Maritime Ports Capital Projects Federal Funded

## Topics:

- ☐ DOT Planned and Awarded Projects
  - ✓ RAISE Program
  - ✓ PIDP Program
- ☐ Puerto Nuevo Wharf Conditions
  - ✓ Capital Recommended Plan
- ☐ Avenue C Project
- ☐ FEMA Funded Projects
  - ✓ Puerto Nuevo Immediate Plan
  - ✓ Fire Suppression System
- ☐ Isla Grande South Pier 15
  - ✓ FEMA Improved Project
  - ✓ DOT PIDP
- ☐ CDBG – MIT Funded Projects
- ☐ PRPA's Revenue Funded Projects



**PORTS  
AUTHORITY**

GOVERNMENT OF PUERTO RICO



# Maritime Ports Capital Projects

Rebuilding American Infrastructure with Sustainability and Equity (RAISE) grant program  
/ Better Utilizing Investments to Leverage Development (BUILD) grant program

Fiscal Year	Budget (Year)	Project Description				
		Scope of Work	Cost	Fed	Status	
FY 2022	\$1.5 billion	Reconstruction of Wharf C, and Associated Works	\$27.13 million	\$25 million	Awarded!	NEPA on final stage / RFP A/E – Finished
FY 2023	\$2.3 billion	Tote Yard Improve Pavements for Container Staking	\$12.1 million	\$9.7 million	Not Awarded	-
		Crowley Yard Improve Pavements for Container Staking and RO-RO Ramp improvements Mooring Dolphin Rehabilitation	\$14.3 million	\$10 million	Not Awarded	-
		Planning and Design Avenue C Puerto Nuevo	\$3 million	\$3 million	Awarded!	Ongoing (15% completed )
FY 2024	\$1.8 billion	Reconstruction of Wharf D, and Associated Works	\$27.13 million	\$21,224 million	Awarded!	NEPA on final stage / RFP A/E – Finished
FY 2025	\$1.5 billion	Reconstruction of Avenue C Puerto Nuevo	\$25 million	\$25 million	Not Awarded	-



**PORTS  
AUTHORITY**

GOVERNMENT OF PUERTO RICO



# Maritime Ports Capital Projects

## Port Infrastructure Development Program (PIDP)

### Project Description

Fiscal Year	Budget (Year)	Project Description				
		Scope of Work	Cost	Fed	Status	
FY 2022	\$450 million	Reconstruction of Wharf C, Fire Suppression System and San Juan Port Micro Power Grid	\$78.6 million	\$63 million	Not Awarded	-
FY 2023	\$662 millions	Port Micro Power Grid System and Yard Improve Pavements for Container Staking	\$40.8 millions	\$13.6 million	Not Awarded	-
FY 2024	\$500 millions	Reconstruction of Wharf N-O, and Associated Works	\$87 million	\$53.5 million	Awarded!	EA on final stage / RFP A/E – Finished
FY 2025	\$450 millions	Reconstruction of Avenue C Puerto Nuevo	\$25 million	\$20 million	Pending	PRPA Submitted a proposal





PORTS  
AUTHORITY

GOVERNMENT OF PUERTO RICO



# Maritime Ports Capital Projects

## RAISE/ BUILD Federal Funded Planning and Design Ave C

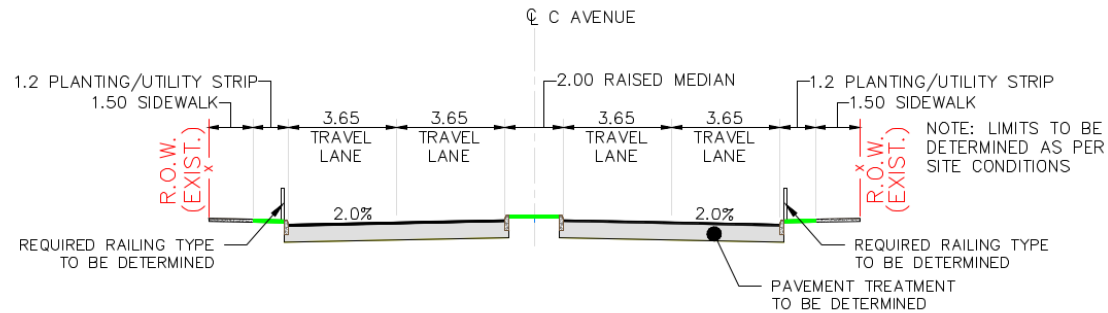
Reconstruction of Avenue C Granted with \$3 Million for Planning and Design:

(Seeking funding for construction phase)

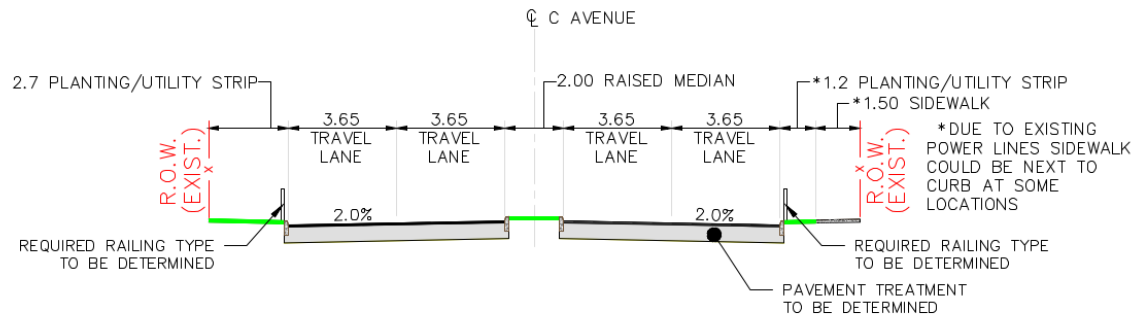
Project Scope :

- ❑ Pavement section in concrete
- ❑ Roadway configuration
- ❑ Traffic operations
- ❑ Geometric configuration
- ❑ Signalization, traffic control devices, signage, markings, and traffic safety devices
- ❑ Drainage and storm water management
- ❑ Wastewater management
- ❑ Firewater distribution system
- ❑ Illumination and electrical system
- ❑ Security surveillance and perimeter fencing
- ❑ Weight station for DTOP

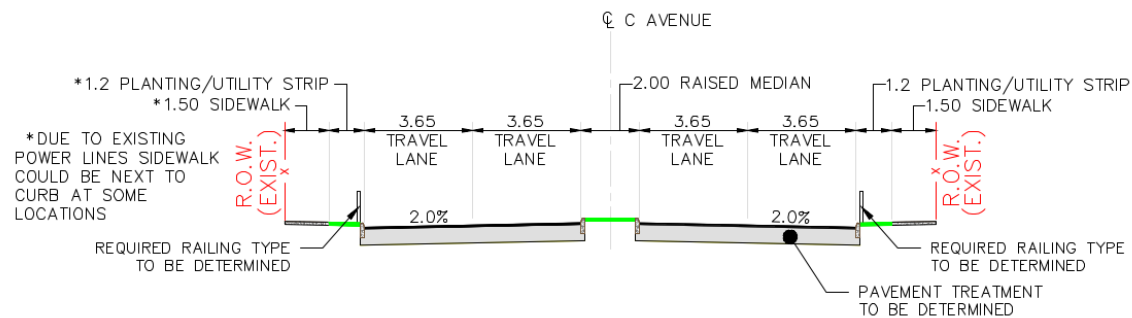




TYPICAL NORMAL CONSTRUCTION SECTION (C AVENUE)  
EAST OF MAIN ACCESS ROAD INTERSECTION

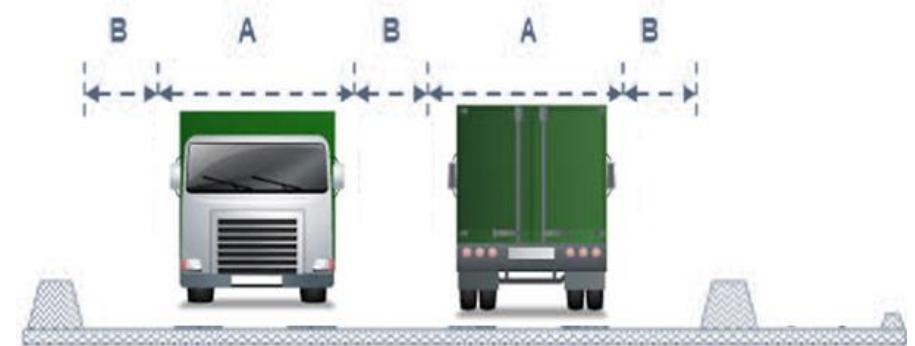


TYPICAL NORMAL CONSTRUCTION SECTION (C AVENUE)  
WEST SIDE OF MAIN ACCESS ROAD INTERSECTION



TYPICAL NORMAL CONSTRUCTION SECTION (C AVENUE)  
MAIN ACCESS ROAD

# Roadway Configuration



[https://www.hsa.ie/eng/your\\_industry/quarrying/vehicle\\_and\\_pedestrian\\_safety/construction\\_of\\_haul\\_roads/](https://www.hsa.ie/eng/your_industry/quarrying/vehicle_and_pedestrian_safety/construction_of_haul_roads/)  
<https://www.iconarchive.com/>

# Puerto Nuevo Wharf Summary and Condition Rating

## Two Cycles of Condition Assessment 2018 / 2023

Facility	Year of Construction	Type	Berthing Length (Linear feet)	Construction Material	2018 Condition Assessment Rating	2023 Condition Assessment Rating
Wharf C	Late 60's	Open Pile Platform	600	P.S. Concrete, Steel, & Concrete	Serious	Serious
Wharf D	Late 60's	Open Pile Platform	600	P.S. Concrete, Steel, & Concrete	Poor	Serious
Wharf E	Late 60's	Open Pile Platform with Curtain Wall	600	Steel & Concrete	Fair	Fair
Wharf F	Late 60's	Open Pile Platform with Curtain Wall	600	Steel & Concrete	Fair	Fair
Wharf G	Late 70's	Open Pile Platform / Sheet Pile Coffered Cell Platform	600	Steel & Concrete	Fair	Satisfactory / Poor
Wharf H	Late 70's	Sheet Pile Coffered Cell Platform	600	Steel & Concrete	Fair	Poor
Wharf J	Late 70's	Sheet Pile Coffered Cell Platform	600	Steel & Concrete	Fair	Fair
Wharf K	Late 70's	Sheet Pile Coffered Cell Platform	600	Steel & Concrete	Fair	Fair
Wharf L	Late 70's	Sheet Pile Coffered Cell Platform	600	Steel & Concrete	Fair	Fair
Wharf M	Late 70's	Sheet Pile Coffered Cell Platform	600	Steel & Concrete	Poor	Poor
Wharf N	Aprox. 1980	Sheet Pile Coffered Cell Platform / Sheet Pile Bulkhead Platform	600	Steel & Concrete	Poor	Poor / Critical
Wharf O	1999/2004	Sheet Pile Bulkhead Platform / Mooring Dolphin	748	Steel & Concrete	Poor	Critical / Fair

 Denotes restricting live load to 150 PSF for the platform.

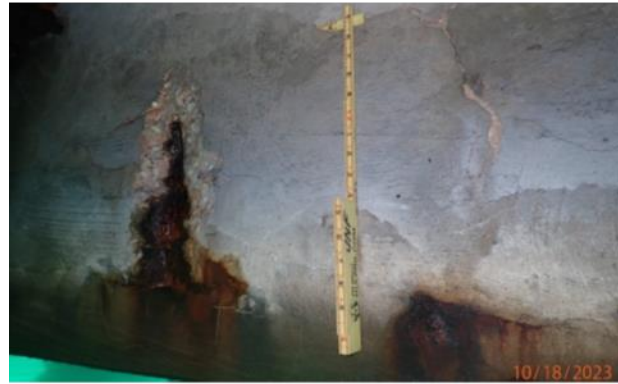
 Denotes prohibiting live load within 50 PSF of the platform edge.



# Puerto Nuevo Terminal Condition:

## Main Issues Wharves C, D, N, & O

- ❑ Wharf C: The immediate recommendation is to restrict live loading to 150 pounds per square foot within 38 feet from the face of the platform. Serious Condition.
- ❑ Wharf D: The immediate recommendation is to restrict live loading to 150 pounds per square foot within 38 feet from the face of the platform. Serious Condition.
- ❑ Wharf N: The immediate recommendation is to prohibit all live loads within 50 feet of the edge of the platform from Station 4+18 to Station 6+00. Poor/Serious Condition. Lack of structural capacity.
- ❑ Wharf O: The immediate recommendation is to prohibit all live loads within 50 feet of the edge of the platform. Serious Condition. Lack of structural capacity.
- ❑ These are the most critical “Main Issues” wharves that require immediate attention in order to maintain operability.



PORTS  
AUTHORITY

GOVERNMENT OF PUERTO RICO







PORTS  
AUTHORITY

GOVERNMENT OF PUERTO RICO



# Maritime Ports Capital Projects

## DOT Federal Funded – Puerto Nuevo



**Project Costs:** \$98.6 Million

**Funding Source:** Wharf C: RAISE FY 2022, \$24M  
Wharf D: RAISE FY 2024, \$21.2M  
Wharf N&O: PIDP FY 2024, \$53.4M

**Project Status:** ☒ NEPA in process, schedule to be approved on June 2025  
☒ Recipient Agreement in process  
☒ Program Management in process

**Implementation Method:** A Project Manager was selected to implement a Design-Build RFQ/RFP (30% Design Criteria Package) for four wharves.



# Funding Plan:

Federal Program	Project Title	Federal Participation	Grant Amount	Local Funds	Subtotals
RAISE FY22	Wharf C _ Reconstruction & Resiliency Enhancement	92%	\$25,000,000	\$2,126,897	\$27,126,897
RAISE FY24	Wharf D _ Reconstruction & Resiliency Enhancement	95%	\$21,224,804	\$1,164,800	\$22,389,604
PIDP FY2024	Wharves N & O _ Reconstruction & Resiliency Project	61.5%	\$53,526,756	\$33,473,244	\$87,000,000
PIDP FY2021	Pier 15 Rehabilitation & Enhancement	80%	\$10,000,000	\$2,500,000	\$12,500,00
Contingency				\$10,735,059	\$10,735,059
Puerto Rico Government Contribution				\$50,000,000	\$147,251,560







PORTS  
AUTHORITY

GOVERNMENT OF PUERTO RICO

# Maritime Ports Capital Projects

## FEMA Funded



### PROJECT NUMBER:

50328

### PW NUMBER:

4583

### TYPE:

Improve Project

### DESCRIPTION:

Restoration works to pre-disaster condition & construction of a new fire supply line with new fire tank.

### SCOPE OF WORK:

1. Repair of disaster-related damages with pending work to be completed.
2. New Fire Tank is proposed along with the piping and accessories needed to supply the marine front from Wharf O to Wharf D.

### INVESTMENT

\$ 24,373,295.87

### FUNDING SOURCE:

FEMA Public Assistance (PA)  
DR-4339-PR







PORTS  
AUTHORITY

GOVERNMENT OF PUERTO RICO



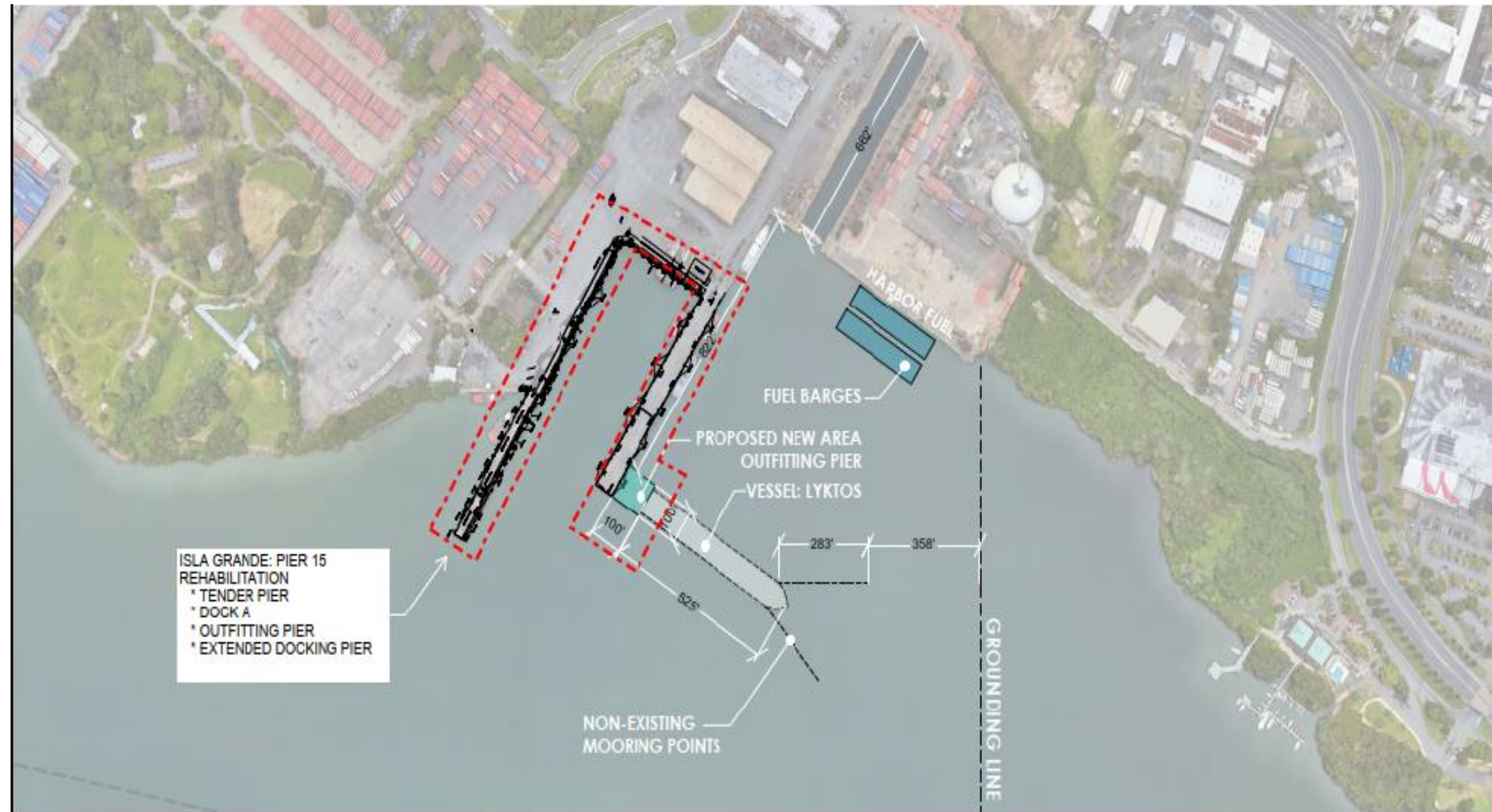
# Maritime Ports Capital Projects

## DOT PIDP Federal Funded Pier 15

### Scope of Work:

- ❑ Installation of a new sheet pile wall in front of the existing one.
- ❑ Installation of tie rods anchored in the ground, spaced 3 meters apart.
- ❑ Filling the space between the new and existing sheet pile walls with lightweight concrete.
- ❑ Replacement of asphalt in the loading area.
- ❑ Installation of fenders along the dock to separate vessels.
- ❑ Installation of mooring bollards along the dock for securing vessels.
- ❑ Rebuild Tender Pier

**Status:** Pending Environmental Assessment  
– FONSI, scheduled for Sept. 2025







**PORTS**  
AUTHORITY

GOVERNMENT OF PUERTO RICO

# Maritime Ports Capital Projects

## FEMA Improved Project Pier 15

**Project Cost:** \$25.6 Million

**Funding Source:** FEMA PA Program  
DR-4339-PR Improved Project

**Project Status:** A/E Design in progress;  
Construction bidding in progress.

**Project Scope:**

- ☐ Graving Dock Shed - Pre-engineered metal shed of 102,890SF that will maximize and incorporate the use of the existing Graving Dock in a more efficient way. This shed will also reoperate the existing Pump Room following current industry standards
- ☐ Site Work
  - ✓ Asphalt Work
  - ✓ Perimeter Fence
  - ✓ Tender Storage Fence
  - ✓ Site Utilities
- ☐ Status: Design completed, bid scheduled for Sept. 2025



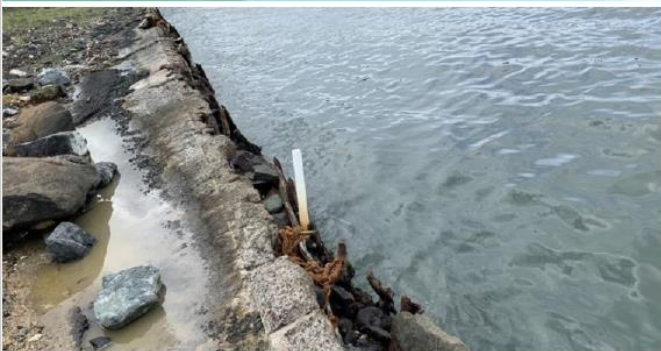


# Army Terminal Pier Reconstruction



PORTS  
AUTHORITY

GOVERNMENT OF PUERTO RICO



## SCOPE OF WORK:

- 1 Main Pier**
  - ✓ Full demolition, disposal, and replacement.
  - ✓ Replacement of all mooring, fenders, ancillary structures and utilities.
- 2 Roll-On/Roll-Off (RORO) Ramp**
  - ✓ Full demolition, disposal, and replacement.
  - ✓ Replacement of all mooring, fenders, ancillary structures and utilities.
- 3 Shoreline Structure & Others**
  - ✓ Removal and replacement of all existing shoreline structures.
  - ✓ Installation of a new cantilevered steel bulkhead
  - ✓ Asphalt stabilization improvements.

## DESCRIPTION:

Demolition and reconstruction of the existing pier structures and ancillary facilities.

## OBJECTIVES:

1. Replace the severely damaged port facility.
2. Mitigate current and future risks.
3. Improve critical infrastructure resiliency, and
4. Strengthen maritime transportation lifeline, providing mitigation and economic benefits to the Port of San Juan and the island of Puerto Rico in general.

## INVESTMENT:

\$85,329,737

## FUNDING SOURCE:

CDBG-MIT Program.







PORTS  
AUTHORITY

GOVERNMENT OF PUERTO RICO

# Questions

